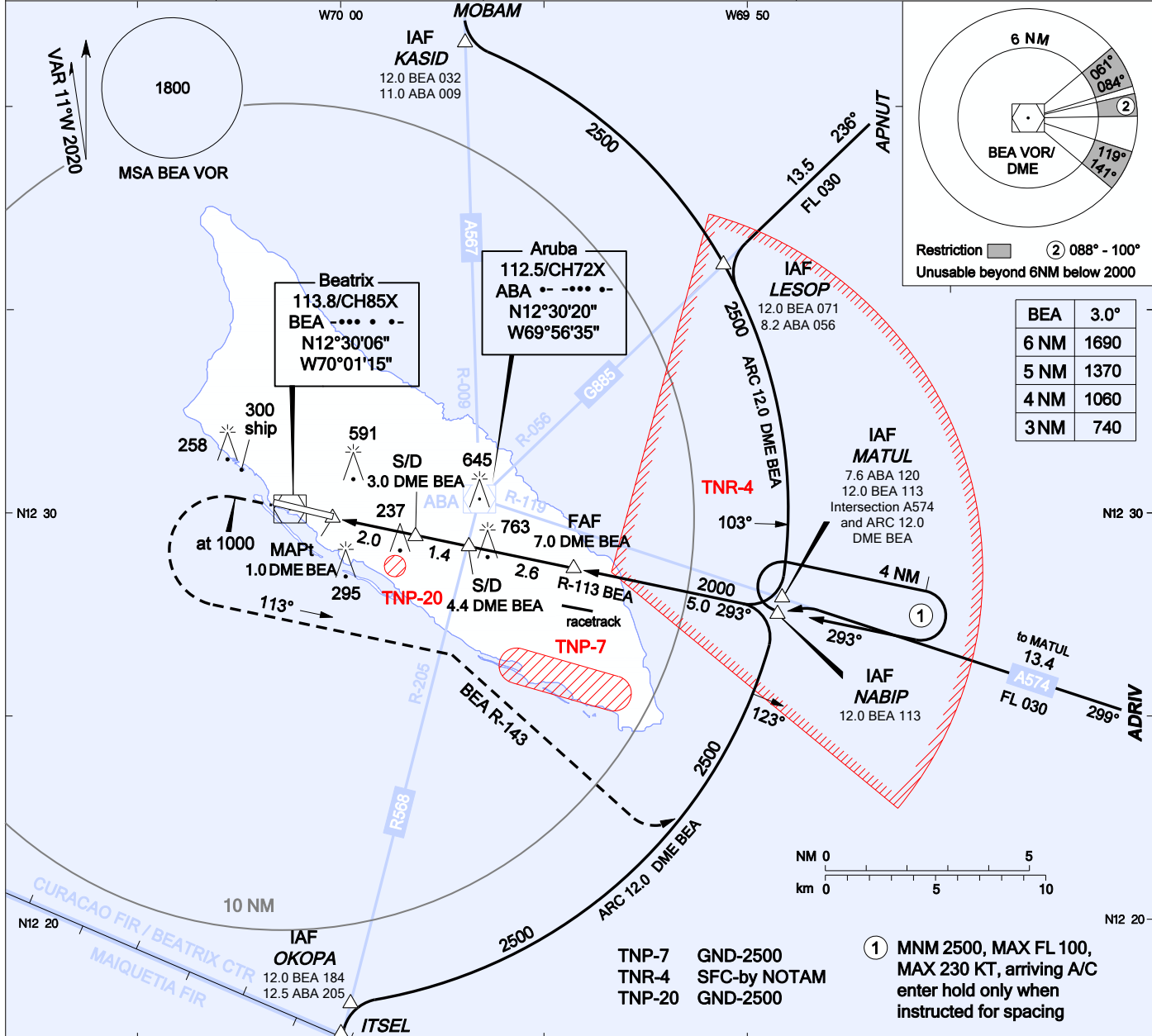
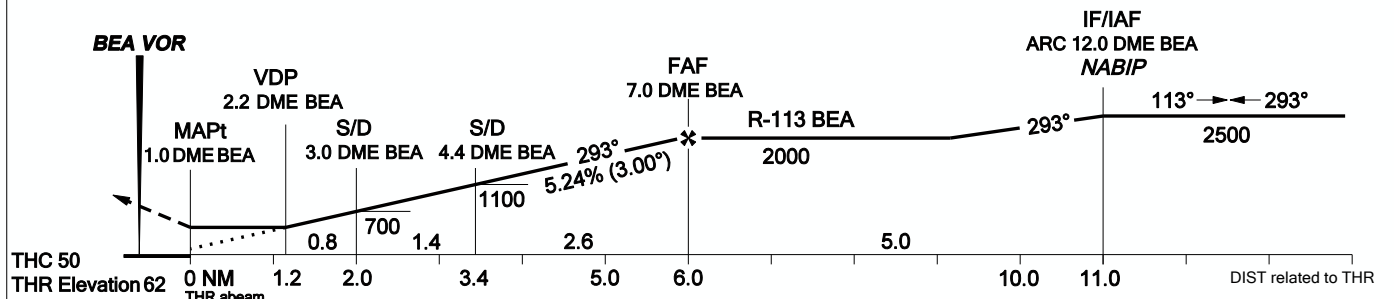


AIP DUTCH CARIBBEAN

INSTRUMENT APPROACH CHART - ICAO	AD ELEVATION: 62 TRANS LEVEL: FL 040 TRANS ALT: 2500 (2438)	BEATRIX: APP 120.9 TWR 118.0 APRON 121.6 ATIS 132.1	VOR RWY 29 REINA BEATRIX INT'L (TNCA) ARUBA
----------------------------------	---	---	---



MISSED APPROACH: Climb on extended centerline to 1000 ft AMSL, then turn left climbing to 2500 ft AMSL on course 113°, join R-143 BEA, join ARC 12.0 DME BEA and hold or as directed by ATC.



OCA(H)	A	B	C	D	GROUNDSPEED - DESCENT RATE						
					KT	70	90	100	120	140	160
STRAIGHT-IN	490 (428)	490 (428)	490 (428)	490 (428)	ft/min	372	478	531	637	743	849
CIRCLING	890 (828)	890 (828)	1160 (1098)	1160 (1098)							

CHANGES: Editorial. MAGVAR2020.

1. DME required.
2. TNR-4 is not active during RWY 29 operations.
3. Heights are relative to AD elevation.
4. Visual descent point (VDP) is where straight-in OCA intersects 3° descent slope.
5. Altitudes, elevations and heights in feet, distances in nautical miles, bearings are magnetic.

MAPt 1.0 DME BEA (abeam THR)	N12 29 52.88	W070 00 11.90
VDP	N12 29 37.80	W069 59 00.69
S/D 3.0 DME BEA	N12 29 28.21	W069 58 14.81
S/D 4.4 DME BEA	N12 29 10.65	W069 56 50.82
FAF 7.0 DME BEA	N12 28 38.30	W069 54 16.22
KASID	N12 41 22.66	W069 56 55.41
LESOP	N12 36 07.99	W069 50 37.51
MATUL	N12 27 54.09	W069 49 11.13
NABIP	N12 27 35.19	W069 49 14.94
OKOPA	N12 18 08.40	W069 59 42.29